

REV. #	DATE	DESCRIPTION
1		
2		
3		
4		
5		
6		
7		
8		
9		
10		
11		
12		
13		
14		
15		
16		
17		
18		

DESCRIPTION OF EQUIPMENT

- ① DRIVE UNIT, HORSEPOWER, VOLT, PHASE, HERTZ.
- ② DRIVE SPROCKET
- ③ DRIVEN SPROCKET
- ④ LIMIT SWITCH
- ⑤ GUARD
- ⑥ DRIVE CHAIN
- ⑦ HEADSHAFT SPROCKET-WITH HARDENED RENEWABLE STEEL TEETH
- ⑧ TRACTION WHEEL
- ⑨ SPRAY PIPING
- ⑩ TAKE-UP BEARING
- ⑪ CAPSTAN NUT
- ⑫ SCREEN CHAIN
- ⑬ SCREEN FRAME
- ⑭ HEAD HOUSING WITH REMOVABLE COVERS AND INSPECTION DOORS
- ⑮ BASKET ASSEMBLY
- ⑯ FOOT SECTION

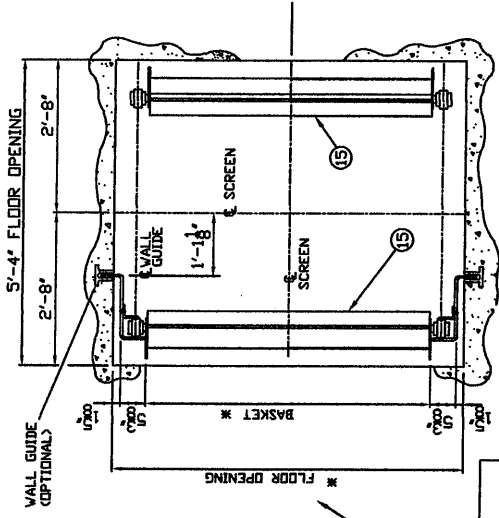
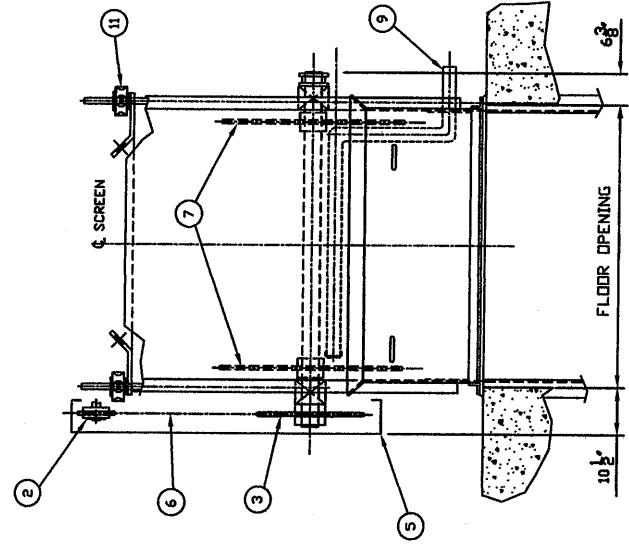
NOTE: DRAWING IS PRELIMINARY DIM. NOTED WITH A * CAN BE CHANGED TO SUIT DESIGN REQUIREMENTS.

THIS DOCUMENT AND DRAWINGS, SPECIFICATIONS AND OTHER INFORMATION SET FORTH THEREON ARE THE EXCLUSIVE PROPERTY OF E & I CORP., AND NO REPRODUCTION OR USE OF SUCH DATA BY ANY OTHER PARTY IS PERMITTED WITHOUT THE WRITTEN CONSENT OF E & I CORP. ANY INFORMATION THAT MAY BE REQUIRED TO BE FILED OF PUBLIC RECORD, SHALL NOT BE A WAIVER OF COMPLETE AND EXCLUSIVE OWNERSHIP BY E & I CORP.

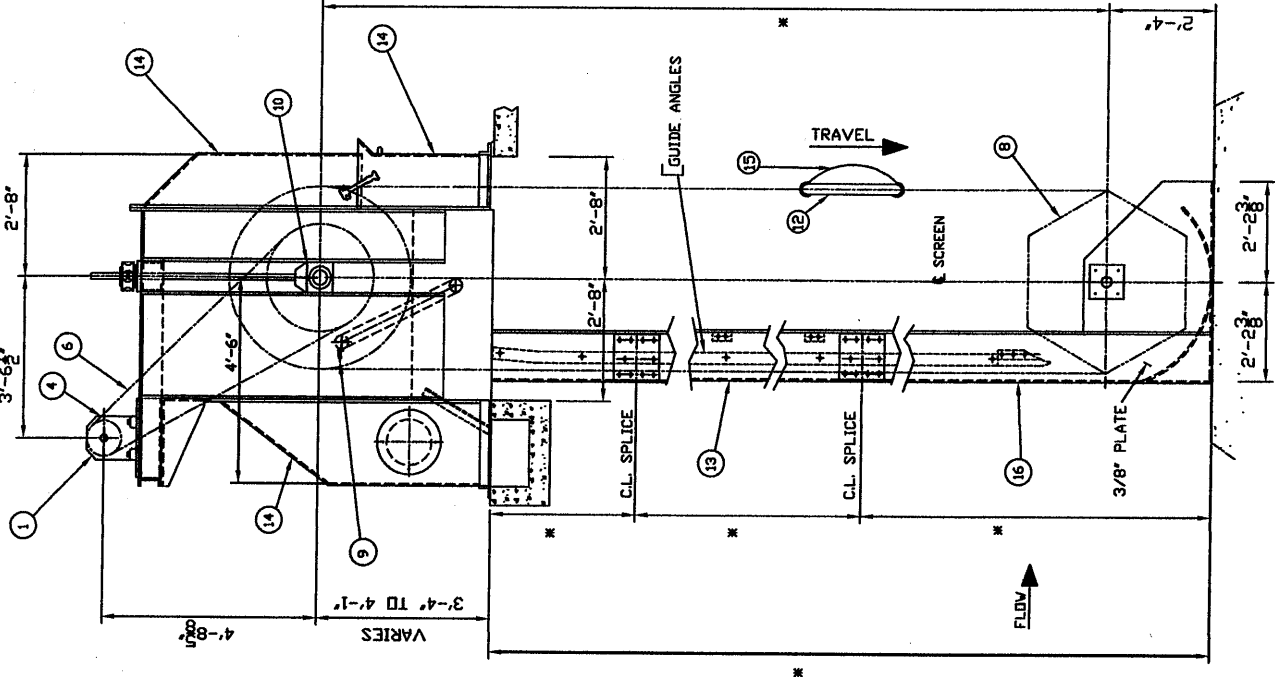
E & I CORPORATION
A Division of McKees-Compton
COLUMBIA, MISSOURI

EQUIPMENT
TRAVELING WATER SCREEN

SCALE	DRAWN BY	DATE	CHECKED BY	DATE	ENGINEER	DATE
NIS	TAS	3-5-52	GTR	3-6-52		40719



NOTE: FLOOR OPENING EQUALS BASKET WIDTH PLUS 1'-2"



NOTE: FLOOR OPENING VARIES 3'-4" TO 4'-1"